

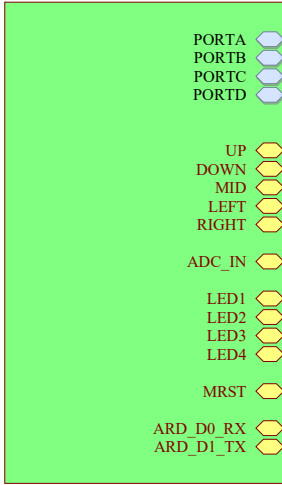
ES-PDS-ES32F0283LT-V1.1.PrjPcb

Table of Contents

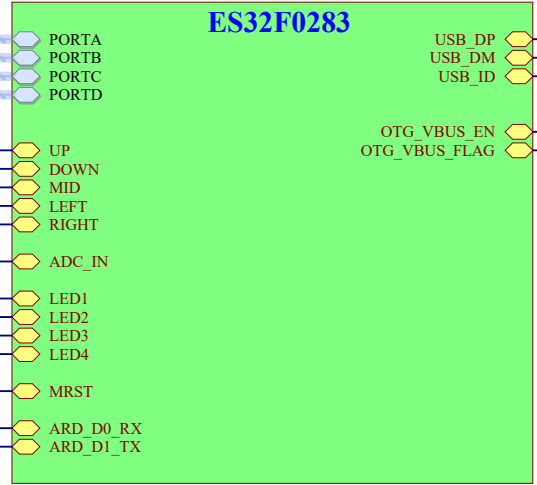
Sheet1: Cover(This Page)

Sheet2: ES-PDS-ES32F0283LT-V1.1.PrjPcb

U_Interface
Interface.SchDoc



U_MCU
MCU.SchDoc

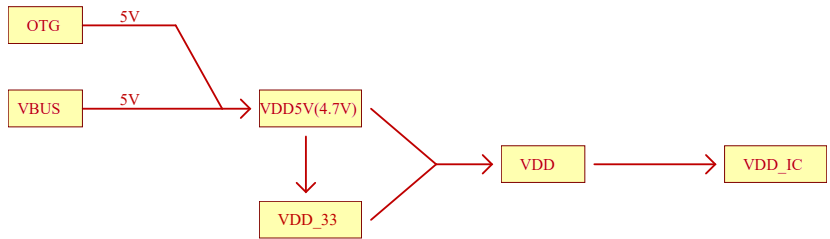
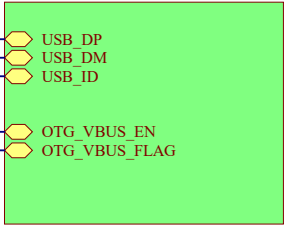


ES32F0283

USB_DP
USB_DM
USB_ID

OTG_VBUS_EN
OTG_VBUS_FLAG

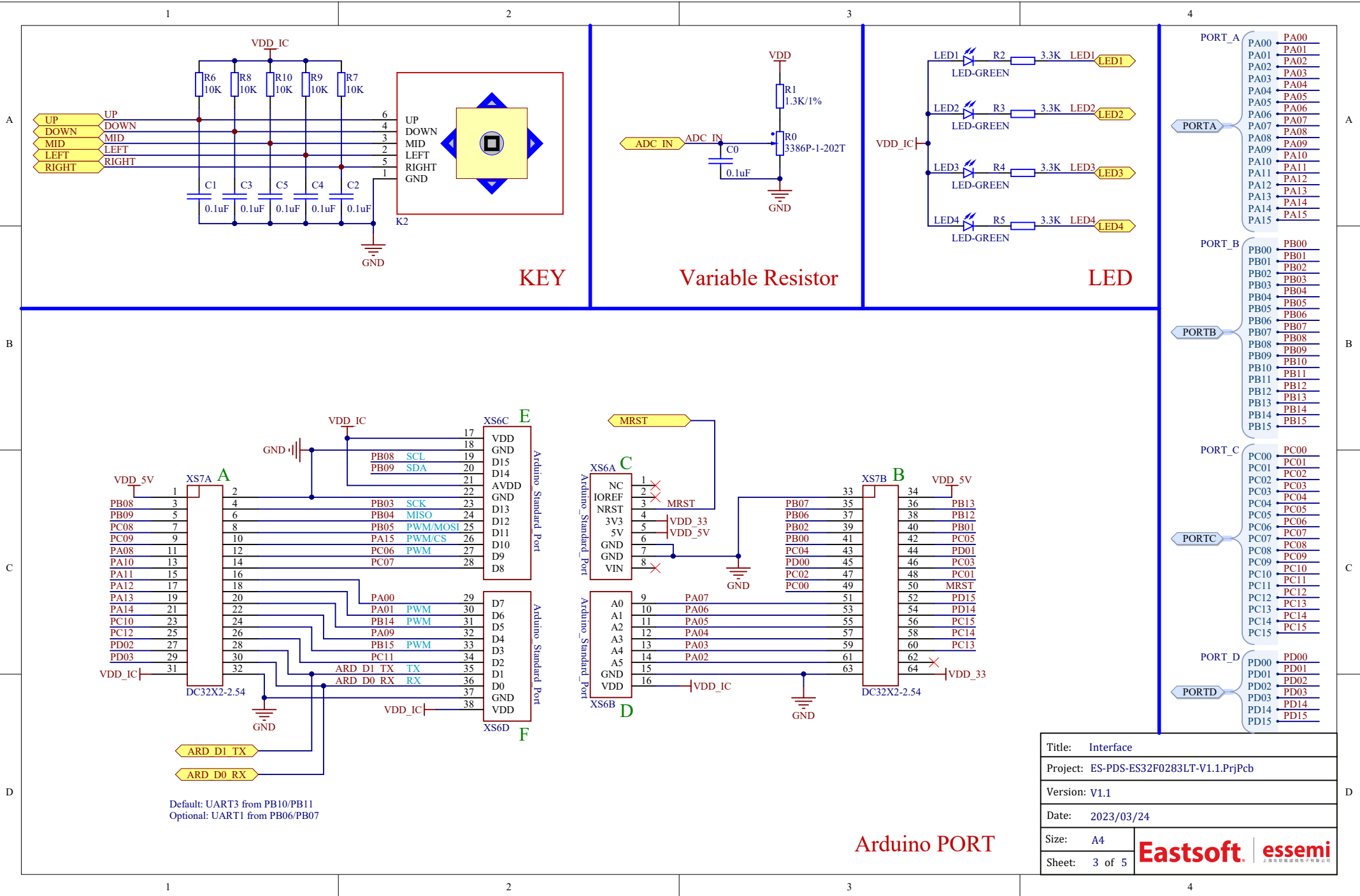
U_Power
Power.SchDoc



Power

Title:	Title
Project:	ES-PDS-ES32F0283LT-V1.1.PrjPcb
Version:	V1.1
Date:	2023/03/24
Size:	A4
Sheet:	2 of 5

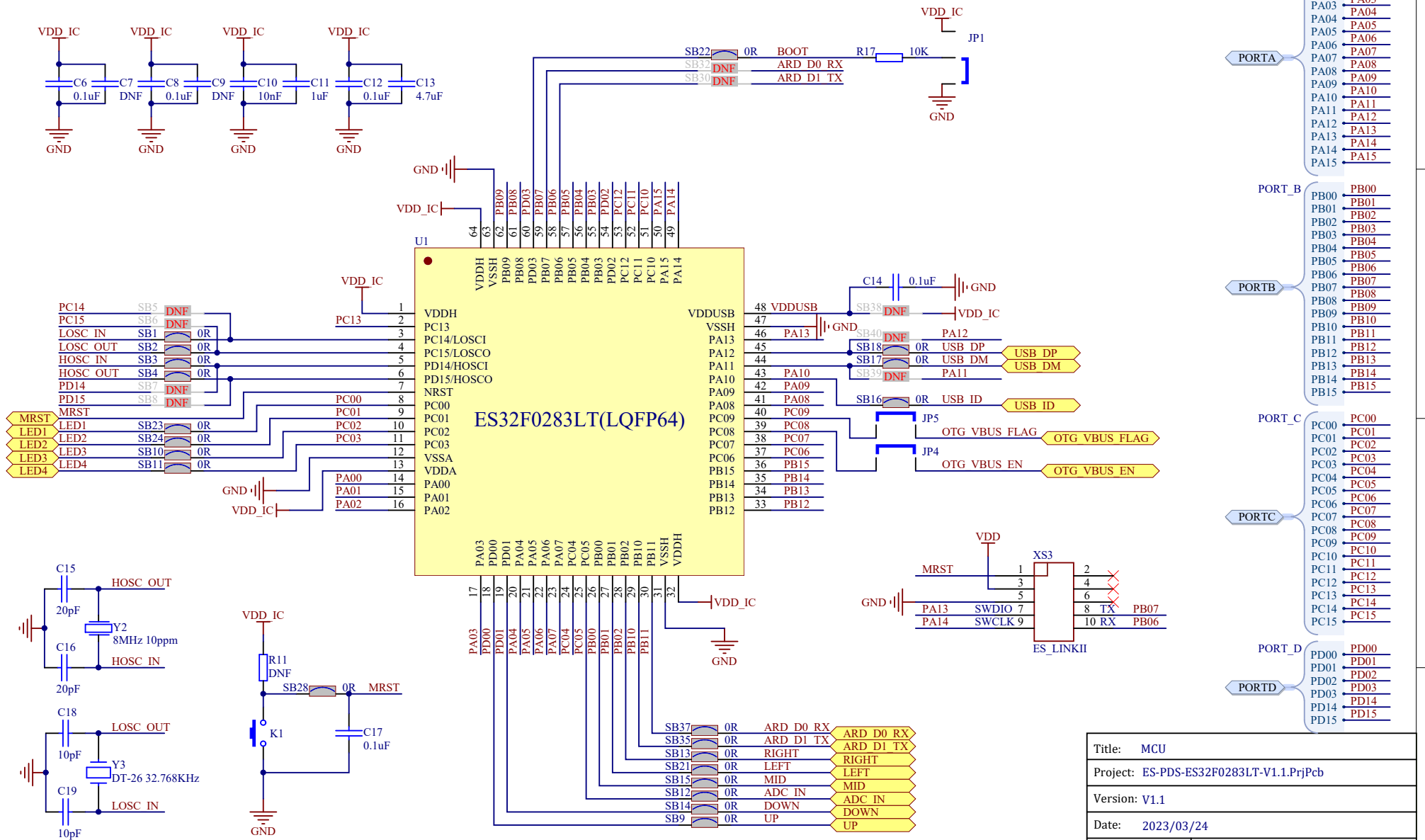
Eastsoft. essemi




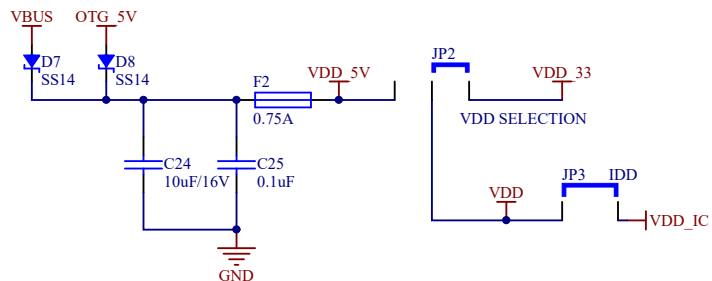
Title: Interface	
Project: ES-PDS-ES32F0283LT-V1.1.PrjPcb	
Version: V1.1	
Date: 2023/03/24	
Size: A4	Eastsoft. essemi
Sheet: 3 of 5	

Arduino PORT

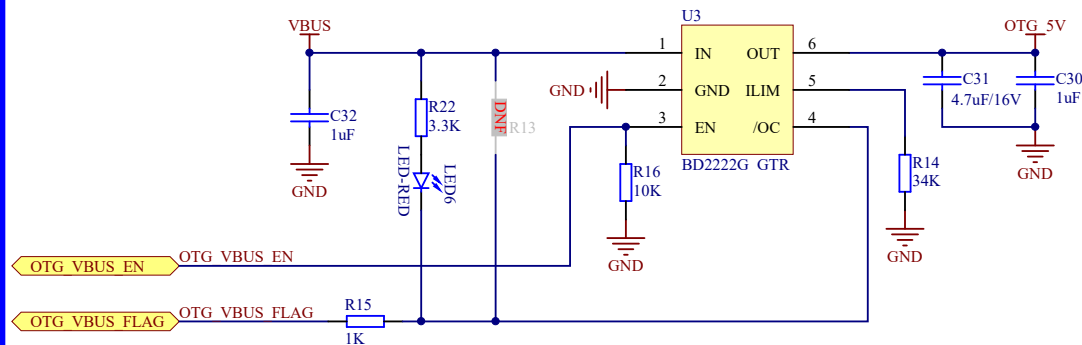
MCU



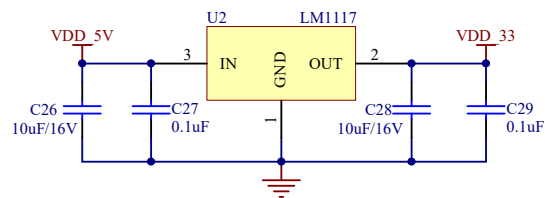
Title:	MCU	
Project:	ES-PDS-ES32F0283LT-V1.1.PrjPcb	
Version:	V1.1	
Date:	2023/03/24	
Size:	A4	
Sheet:	4 of 5	



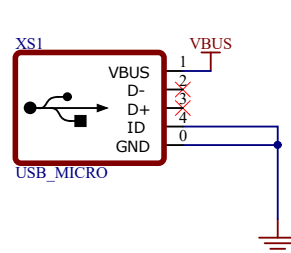
Power_Switch



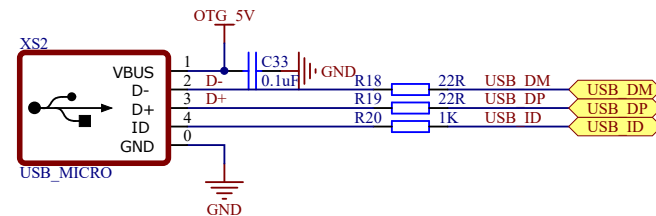
OTG_Power_Switch



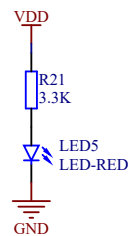
LDO



Micro-USB



USB-OTG



Power_LED

Title: Power	
Project: ES-PDS-ES32F0283LT-V1.1.PrjPcb	
Version: V1.1	
Date: 2023/03/24	
Size: A4	Eastsoft. essemi
Sheet: 5 of 5	